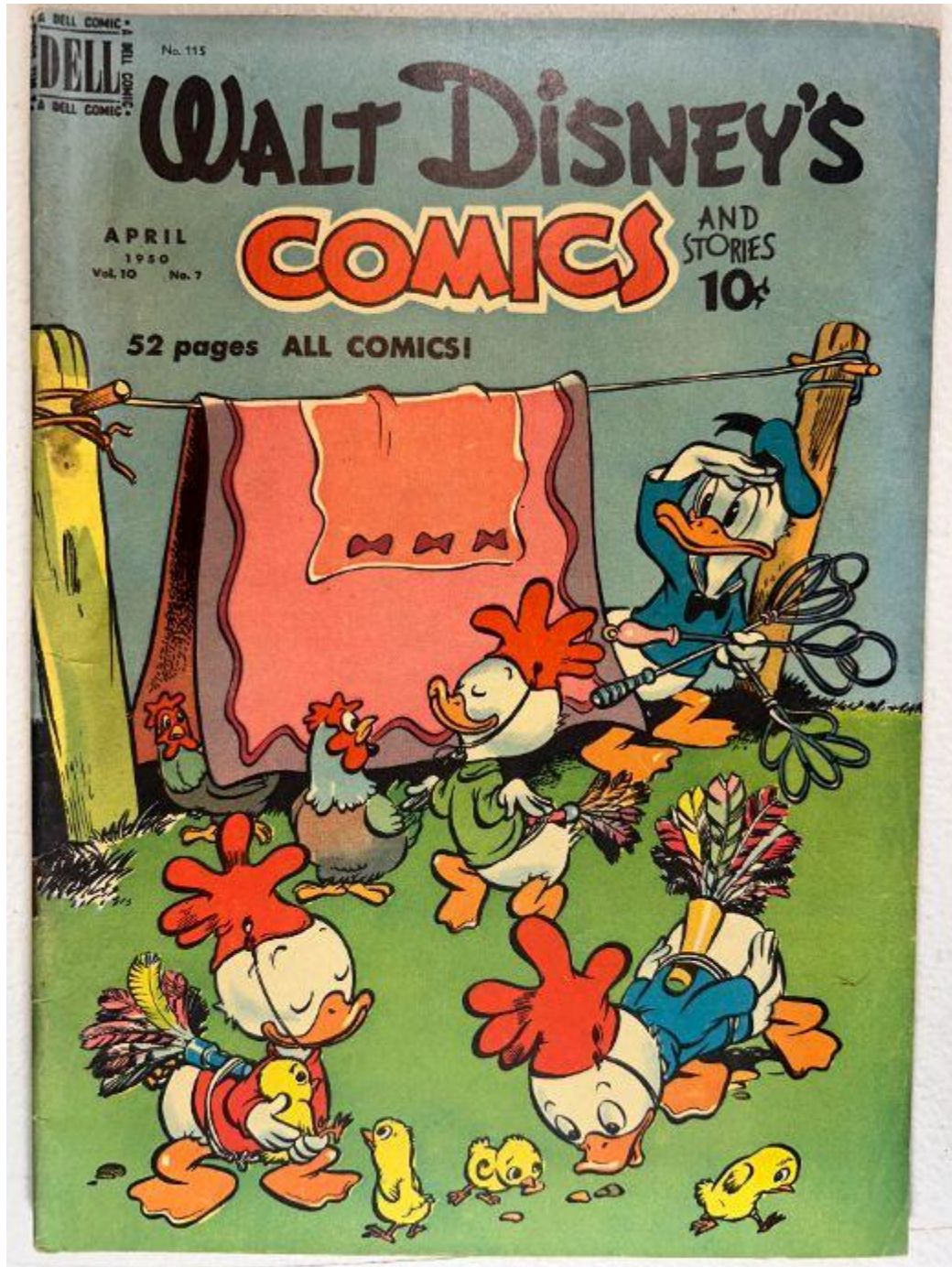


■ **Walt Disney's Comics and Stories – Vol. 10 No.7
(April 1950)**

Evaluation Date: April 5, 2026



SUMMARY OF OBSERVATIONS

This copy presents with strong overall visual appeal and excellent color, but detailed inspection reveals **several discrete, material defects** that must be listed explicitly.

Documented defects include:

- **Localized paper loss and abrasion along the lower spine at the lower staple**, visible on both front and back covers as missing paper and exposed fibers.
- **Concentrated paper compression and cracking at the lower staple hole**, with slight separation at the spine fold.
- **Moderate edge wear and rounding at the lower cover corners**, with softened paper profile.
- **Uniform interior page toning**, darker toward outer margins.
- **Minor edge waviness along interior page margins**, without tearing.

No detached pages, no centerfold separation, and no moisture staining are visible in the provided images.

FRONT COVER — OBSERVATIONS

Walt Disney's Comics and Stories – Vol. 10 No. 7 (April 1950)

Photo Condition & Quality:

High-resolution, evenly lit image. All edges, corners, spine, and surface details are clearly visible.

Observations:

- Blue-green background retains **strong, even color saturation** with no major fading.
- All character outlines and lettering remain sharp with no visible ink bleed.
- Along the **lower spine edge**, directly at and extending a short distance upward from the lower staple:
 - Paper shows **visible loss**, exposing lighter underlying fibers.
 - Abrasion is irregular in shape, not a clean tear, indicating surface wear rather than a single impact.
- Surrounding the **lower staple hole**:
 - Paper exhibits **compression and cracking**, with fibers fractured immediately adjacent to the staple legs.
 - A **shallow separation at the spine fold** is visible, limited to the staple area and not extending into the cover field.

- Bottom edge away from the spine shows **light edge wear**, with softened cut edge but no additional paper loss.
- Corners:
 - Lower corners show **moderate rounding**, with loss of sharp angular definition.
 - Upper corners remain comparatively sharper with only light softening.
- No writing, stamps, or markings observed.

Overall Impression:

Front cover exhibits excellent color with **structural wear concentrated at the lower spine and staple region**.

BACK COVER — OBSERVATIONS

Walt Disney's Comics and Stories – Vol. 10 No. 7 (April 1950)

Photo Condition & Quality:

Even lighting and clear framing of all edges and corners.



Observations:

- Back cover paper tone is **uniform tan/light cream**, consistent with age.
- Along the **lower spine**, corresponding to the front cover defect:
 - Paper shows **localized abrasion and loss**, exposing lighter fibers.
 - Wear mirrors the front cover location but appears slightly less extensive.
- Perimeter edges show **light handling wear**, most noticeable along the bottom edge.
- Corners show **consistent rounding**, more pronounced at lower corners.
- Cinderella advertisement graphics remain fully legible with no ink loss.

Overall Impression:

Back cover is intact, with **localized lower-spine paper damage and general age wear**.

INSIDE FRONT COVER — OBSERVATIONS

Walt Disney's Comics and Stories – Vol. 10 No. 7 (April 1950)

Photo Condition & Quality:

Straight-on image with full margins visible.



Observations:

- Paper color is **cream**, lighter than back cover stock.
- No creases radiating from the spine hinge.
- No writing, subscription marks, stamps, or tape residue observed.
- **Indicia is present and legible**, confirming: *Walt Disney's Comics and Stories, Vol. 10 No. 7, April 1950.*

Overall Impression:

Inside front cover is **clean and structurally sound**.

INTERIOR PAGES — OBSERVATIONS

Walt Disney's Comics and Stories – Vol. 10 No. 7 (April 1950)

Photo Condition & Quality:

Multiple interior pages photographed clearly with margins, panels, and gutters visible.





Page Color: cream to light tan

Observations:

- Pages exhibit **uniform age-related toning**, with slightly darker shading near outer edges.
- Color artwork remains bright and evenly printed.
- Margins on several pages show **minor edge waviness**, visible as shallow undulation rather than folding.
- Page corners show **light softening**, without tears or chips.
- Gutters remain tight with no splitting or elongation.
- No missing material or clipped corners observed.

Overall Impression:

Interior pages are **complete, readable, and evenly aged**, with minor handling effects only.

CENTERFOLD — OBSERVATIONS

Walt Disney's Comics and Stories – Vol. 10 No. 7 (April 1950)

Photo Condition & Quality:

Centerfold shown clearly with both staples visible.



Observations:

- Centerfold remains **attached at both staples**.
- Fold line shows **light, uniform compression** without tearing.
- No staple pull-through observed.

Overall Impression:

Centerfold is **secure and structurally intact**.

SPINE — OBSERVATIONS

Walt Disney's Comics and Stories – Vol. 10 No. 7 (April 1950)

Photo Condition & Quality:

Side-profile image shows full spine contour.



Observations:

- Spine is generally straight.
- **Lower spine area shows concentrated damage**, including missing paper, compression, and surface abrasion.
- No full-length spine split observed.

Overall Impression:

Spine integrity is good overall, with **significant wear localized to the lower staple region**.

UPPER STAPLE — OBSERVATIONS

Walt Disney's Comics and Stories – Vol. 10 No. 7 (April 1950)

Photo Condition & Quality:

Macro image in clear focus.



Observations:

- Upper staple is present and seated.
- Surrounding paper shows **minor compression only**, with no tearing or rust migration visible.

Overall Impression:

Upper staple is **secure with minimal disturbance**.

LOWER STAPLE — OBSERVATIONS

Walt Disney's Comics and Stories – Vol. 10 No. 7 (April 1950)

Photo Condition & Quality:

Macro image clearly shows staple and adjacent paper.



Observations:

- Lower staple remains embedded.
- Surrounding paper shows **paper loss, compression, and fiber fracture**, extending into the spine fold.
- A **small separation at the spine wrap** is visible, without complete pull-through or detachment.

Overall Impression:

Lower staple is intact but surrounded by **notable localized structural wear**.

BRITTLINESS TEST — OBSERVATIONS

visual only

Photo Condition & Quality:

Interior page lifted clearly with adequate lighting.



Observations:

- Page bends in a smooth arc.
- No visible fiber cracking, flaking, or fragmentation observed.

Overall Impression:

Tested page demonstrates **retained flexibility**.